

Hi, I'm Gerda. I'm looking for my friend Kaj

(you say it like 'Hi' with a K).

You will be watching a film of my journey, how Kaj got lost and who I met when I was looking for him. In the parcel are lots of things which you can see in the film. You can play along with them now, and use them afterwards to create your own adventure. Why not set out all the things from the parcel in front of you?

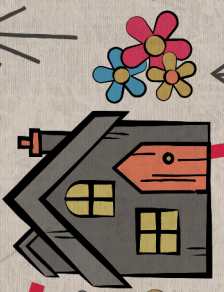
The parcel contains:

- 1) **MAP AND CUT OUT OF ME – GERDA**
Trace around me on card and cut me out so I can walk around the map
- 2) **BINGO CARD**
As you watch, cross things off when you see them
- 3) **BROKEN MIRROR PUZZLE**
*Cut out the pieces of the mirror and see if you can put them back together again.
Beware you don't get a piece in your eye!*
- 4) **HOW TO MAKE A RUDIMENTARY COMPASS**
- 5) **HOW TO MAKE A CROW'S BEAK**
- 6) **CROW SONG AND ROBBER GIRL LYRICS**
Sing along!
- 7) **KEEP A WARM HEART**
Colour in and give to your best friend!
- 8) **INSTRUCTIONS ON HOW TO MAKE REINDEER ANTLERS**
- 9) **THE SNOW QUEEN WORD SEARCH**
- 10) **COLOUR IN FEATHERS**
Why not take inspiration from the colours you see in the film?

If you want, you can make the compass, paper crow and reindeer antlers before watching the film. For this you will need some scissors, a magnet and a needle. Please have someone helping you to make these things.

I hope you enjoy the story.

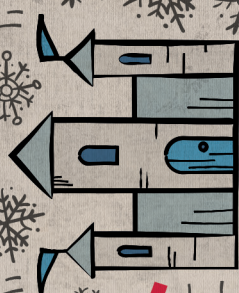
Gerda x



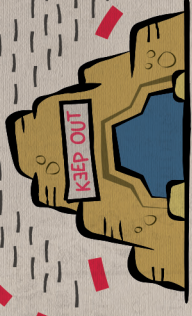
FLOWER WITCH



TREEHOUSE



THE SNOW
QUEEN'S PALACE



ROBBER DEN



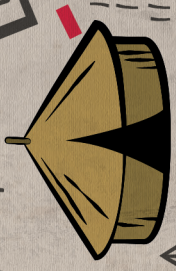
OGRE CABARET
TENT



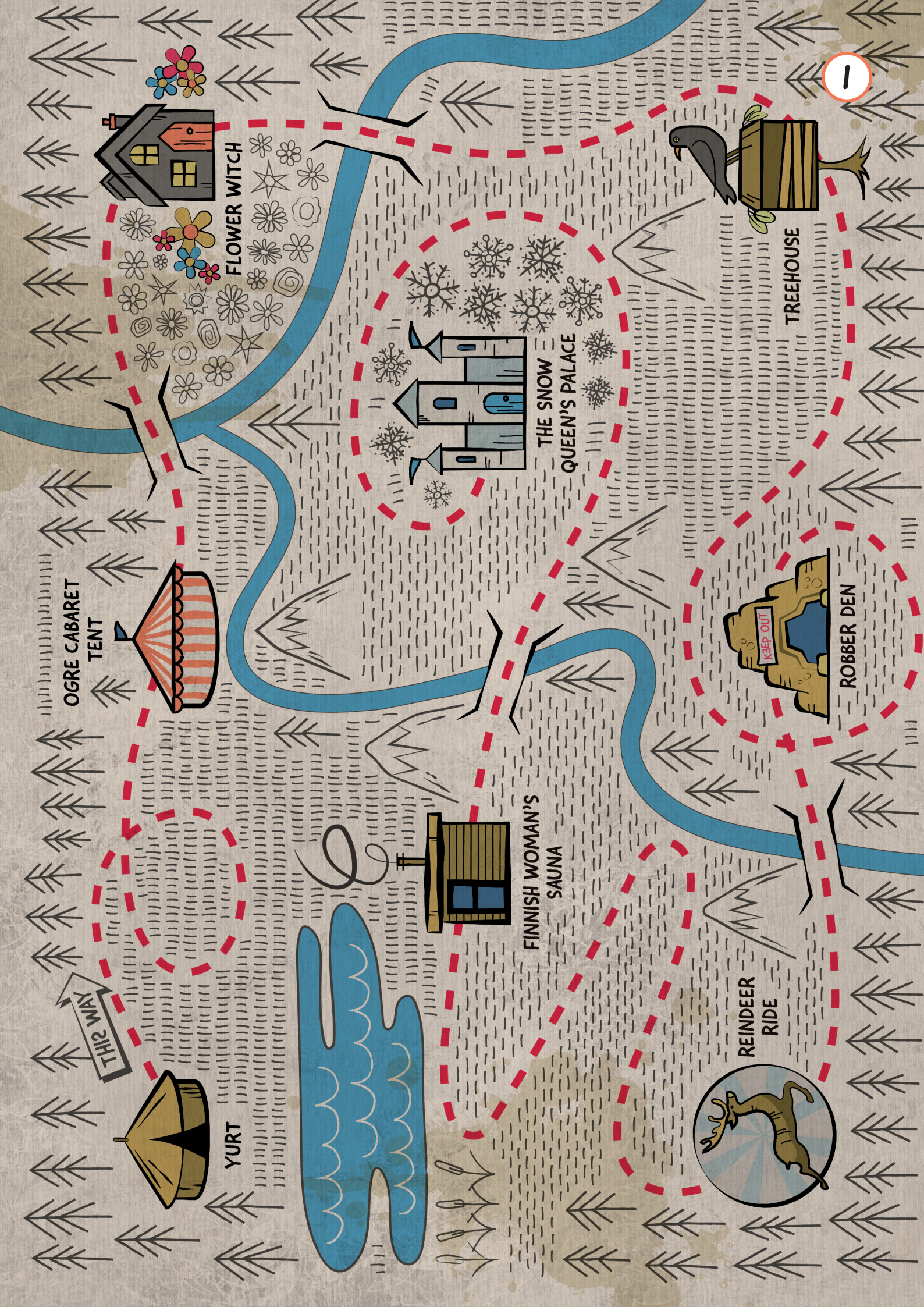
FINNISH WOMAN'S
SAUNA



REINDEER
RIDE



YURT



OGRES' SHOPPING LIST

2

half a litre of Frog Snot

16 Newts Eyeballs

a pint of skimmed milk

frozen prawns

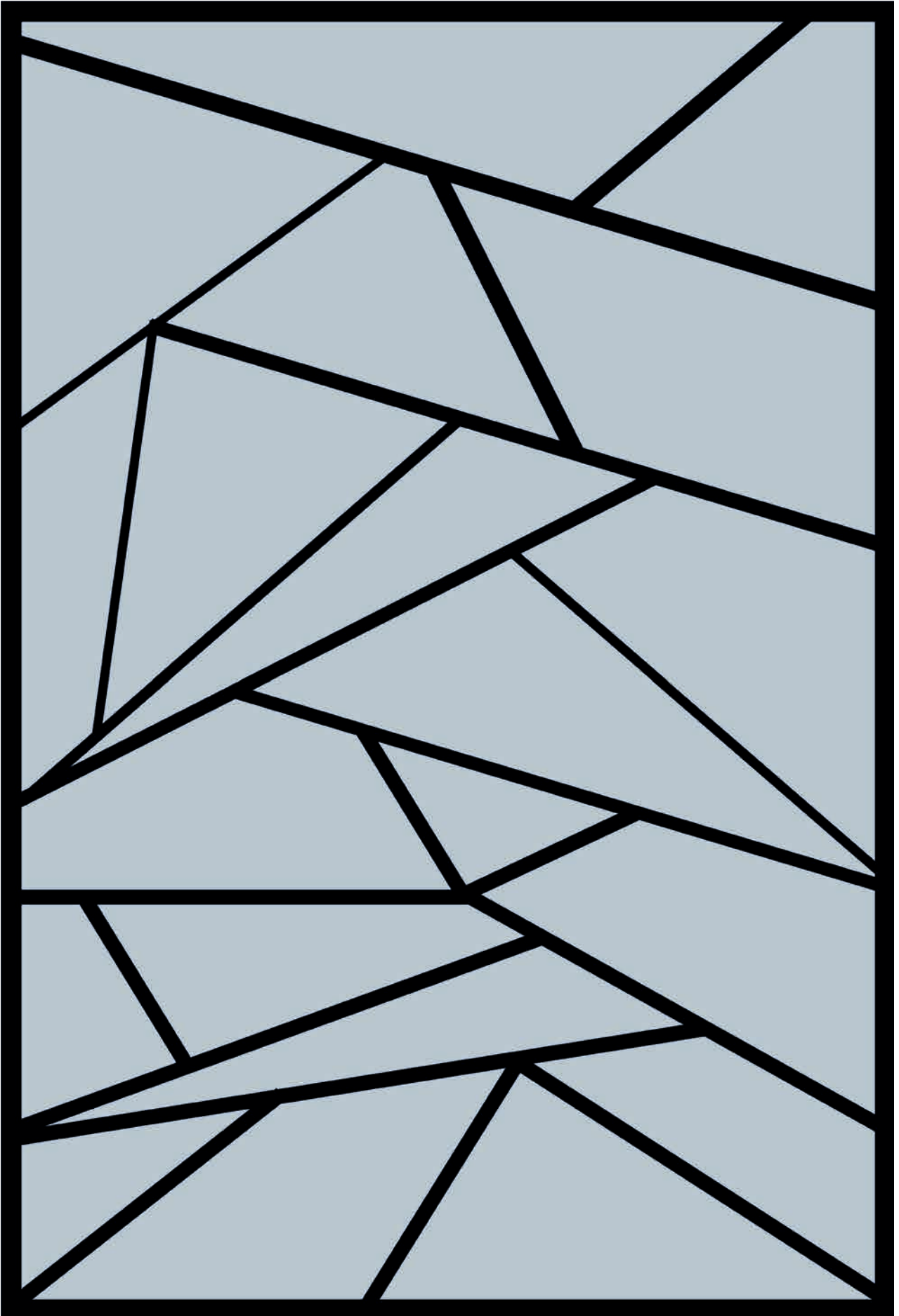
hand sanitiser

chocolate



BINGO





How to make your (rudimentary) compass

5

You will need a:

- Cork
- Needle
- Magnet (this could be the back of a fridge magnet)
- Bowl filled with water
- Spare hand!
- Adult to supervise

1. With some help, put the needle on top of the magnet. Move it back and forth over the magnet and count 12 times. This is to magnetise the needle.
2. Then carefully place the needle onto the piece of cork and place it in the bowl of water.
3. After a few seconds the needle will point towards north in the bowl of water.
4. You can now see the direction Gerda is travelling to find her friend Kaj.

What direction does your school or house face?

Where would you get to if you starting walking north?



How to make an origami Crow beak

6

You will need:

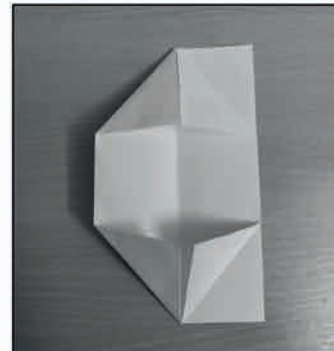
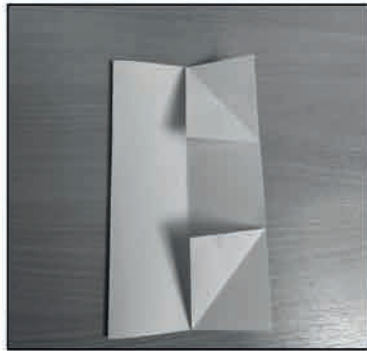
- Yellow paper
- Scissors
- A spare hand!

1. Get your A4 piece of paper and put it lengthways (so it is longer than it is tall) on the table. Fold your A4 piece of paper in half.

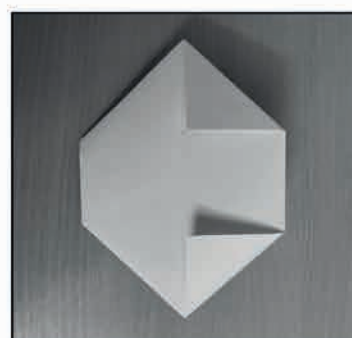
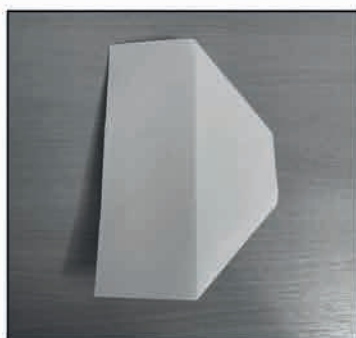
2. Fold in half again and unfold.



3. Where the paper opens (like a book), fold two diagonal corners with the top fold of paper. Then fold the other two corners (on the left) so you are left with a shape like this.



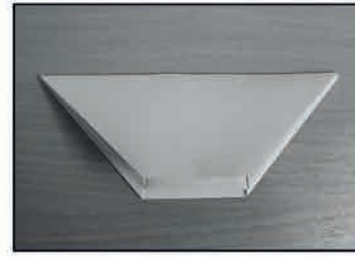
5. Now turn the paper over and fold the other 2 corners so you are left with a diamond shape.



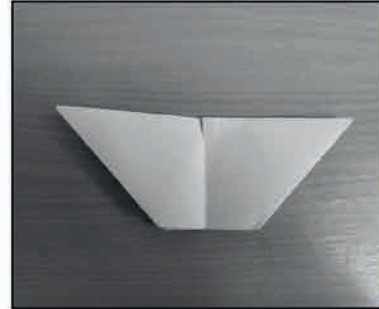
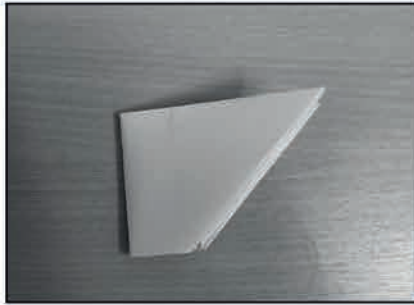
6. Now fold the top flap of the paper in half.



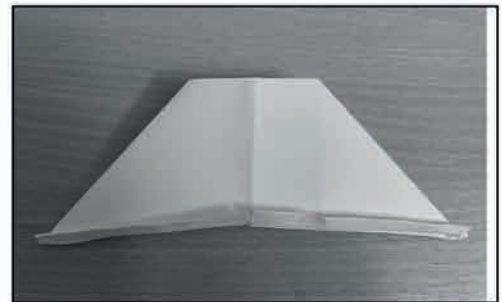
7. Then turn the paper over and fold in half, it should now be blank on both sides.



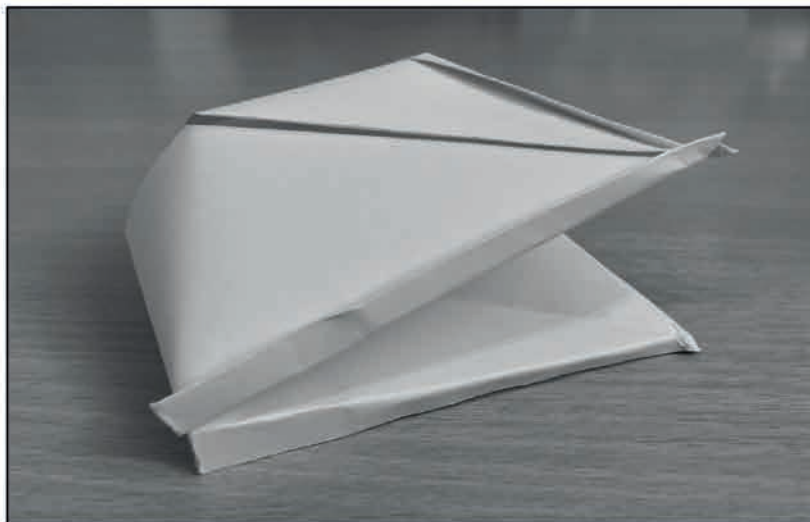
8. Now fold this in half so there is a crease down the middle. You then make a small cut on that centre point on both sides of the paper (be careful!).



9. With the cut, you can now fold the paper at an angle from the cut to the top of the paper. Do this on both sides. You've got this!



10. Finally, slowly push the paper open and bring both tips together. That is your crow's beak completed.
You can now sing away with the crows in the woods!



THE CROW SONG

We are the Crows, we are the Crows (oh baby),
We are the Crows (oh baby), we are the Crows,
And our nests are high, our nests are high (so high),
And we like to fly, we like to fly!

We are the crows and we fly so high,
We study language in the sky,
We say to ourselves,
Squark, squark, squark!

We like to study without a rest,
We write algorithms in our nest.
Mmmm mmm

We are the Crows, we are the Crows (oh baby),
We are the Crows (oh baby), we are the Crows,
And our nests are high, our nests are high (so high),
And we like to fly, we like to fly!

THE ROBBER SONG

Robbin' robbin' robbin' robbin' That's what we like to do,
Robbin' robbin' robbin' robbin' Careful we might rob you!

Thievin' thievin' thievin' thievin', That's how we like to live,
Thievin' thievin' thievin' thievin', That's all we got to give.

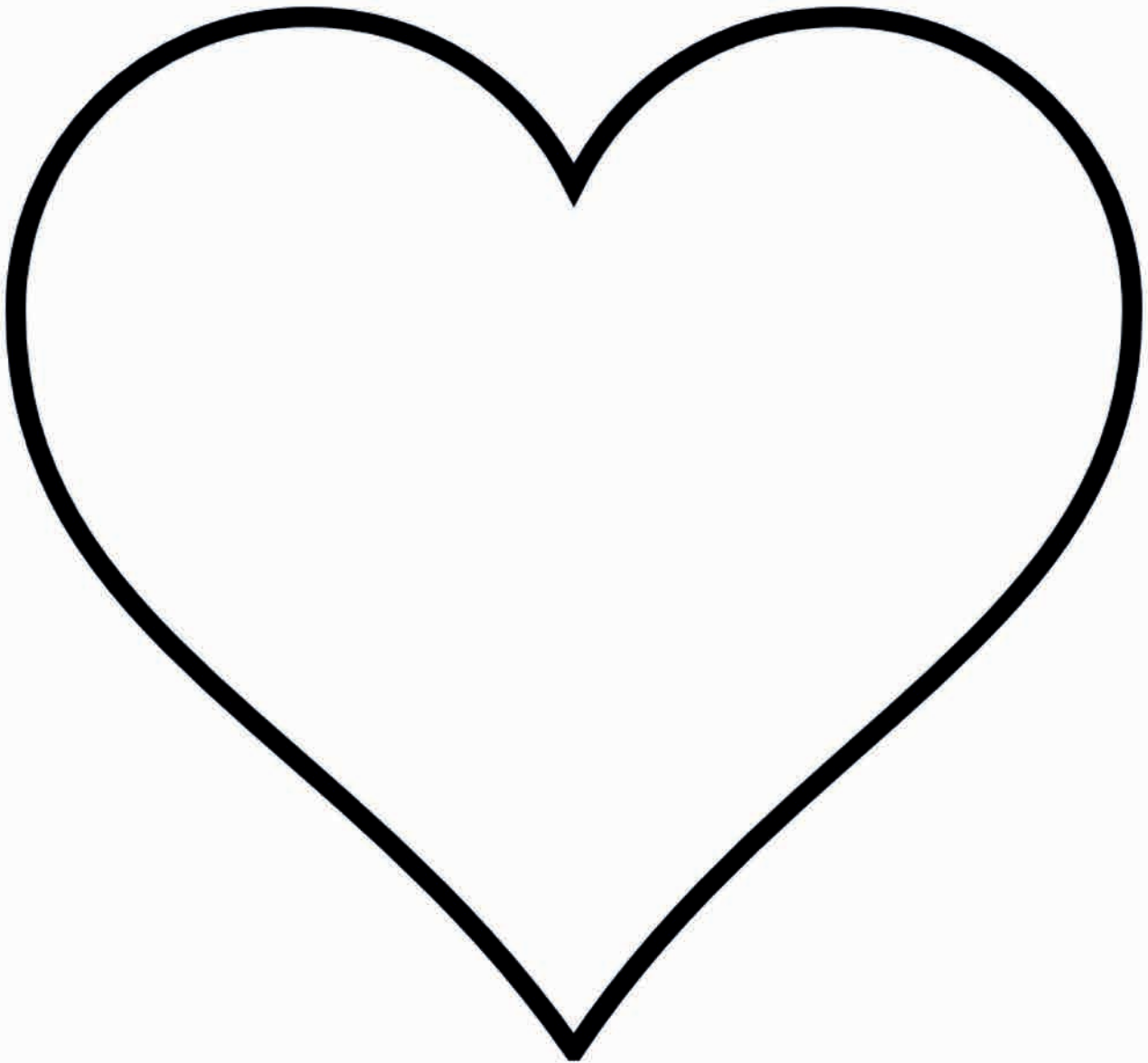
Nickin' nickin' nickin' nickin', Nickin' all your cash – HA!
Nickin' nickin' nickin' nickin' Grab it quick let's dash!

Stealin' stealin' stealin' stealin', Stealin' all your dough,
Stealin' stealin' stealin' stealin', We grab it quick and go!

When we was young,
We was honest, good and true,
But societal pressures mean now robbing's what we do...!

Robbin' robbin' robbin' robbin', That's what we like to do,
Robbin' robbin' robbin' robbin', Careful we might rob you!!!

*Keep A
Warm Heart*



How to make Reindeer antlers



You will need:

- Cardboard (breakfast cereal box/ brown box/ anything you can find)
- Scissors
- Pencil
- Ruler (if you want)

1.

Get two pieces of cardboard roughly 38cm by 38cm. For younger reindeers, smaller pieces will do. If you can't find what you need, glue or Sellotape pieces together.

If you are a reindeer who likes precision, measure the circumference of your head, divide it in half, add 2 x 8 cm to get the length of one of your pieces.

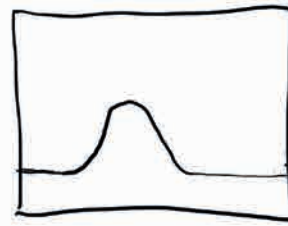
2.

Make a drawing of a rectangle on one of your cardboard pieces.

3.

Add a bump to your long rectangle shape. Strange, I know. The 'bump' should be about the height of your fist with both thumb and small fingers sticking out.

Smaller hands need smaller antlers, otherwise it could seriously put you out of balance...



4.

Cut out your shape (ask an adult for help if you need!). Make sure you keep the left over cardboard – you will need it later.

5.

Put it on top of the other cardboard piece and draw around it. Now cut out the second piece of cardboard so you have two matching mirrored shapes.

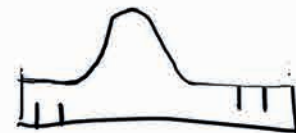


6.

Now make cuts like this in the first cardboard strip.

All cuts must be cut half way into the width.

The distance between the cut must be the same each time. You can measure this in two fingers as a distance or use a ruler.



7.

Attention!

Now the other piece MUST be cut from the opposite side. Where you've cut downwards, you must cut upwards on the mirrored piece.



- 8.**
Make the pieces slot together like teeth.

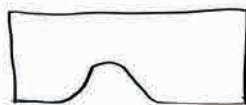


- 9.**
Do the same on the other side, so you now have something like a crown that fits on your head.

- 10.**
Then make a cut half-way down the 'bump' on each piece.



- 11.**
Now get your leftover cardboard.

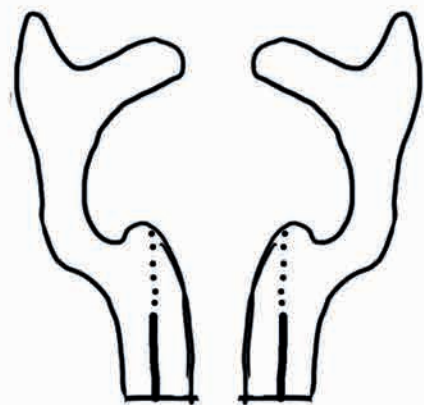


- 12.**
Draw an antler shape.



- 13.**
Cut it out and copy it onto the other piece of cardboard and cut this one out too.

- 14.**
Then make a cut the same length as you've done on the antler base and fold the rest.



- 15.**
Slot them into the antler base and you are now have reindeer antlers!

For more help, please check out the 'how to' video at www.junction.co.uk

Or else...
Go for a walk in the woods, pick some sticks.
Stick them to an old hat.

The Snow Queen Word Search

N	R	W	B	W	D	K	A	X	S	A	T	G	S	E	W	E	C	X	Y
R	E	D	R	O	C	E	R	C	B	S	U	R	K	S	L	U	J	L	C
M	F	A	N	T	L	E	R	S	C	I	A	A	A	E	A	D	R	E	G
Q	A	E	S	R	G	X	K	D	T	O	L	P	L	E	X	B	C	N	F
Z	U	P	W	E	M	J	D	A	N	F	R	U	M	P	H	I	D	A	R
S	B	I	O	E	T	Q	R	V	W	C	K	D	P	O	A	K	O	S	C
M	A	G	R	H	C	L	L	O	D	U	L	Y	I	R	C	Q	S	Y	R
M	R	M	W	O	Y	M	N	I	R	J	S	U	Z	O	Z	J	M	D	O
E	T	Z	T	U	M	S	G	J	A	B	V	A	H	Y	N	P	K	F	W
R	R	H	G	S	X	I	S	X	H	N	D	J	C	E	M	X	K	J	Y
X	U	K	H	E	I	M	R	S	S	K	A	J	L	N	O	Z	G	F	I
Q	Y	Q	Z	J	U	R	D	R	R	X	Y	F	D	R	R	M	E	J	O
L	Q	U	Z	L	Z	O	H	D	O	E	M	K	R	U	O	N	L	K	Y
Y	Q	D	S	V	O	O	S	C	F	R	W	E	U	O	B	E	O	P	Y
H	C	T	I	W	R	E	W	O	L	F	I	S	N	J	B	P	P	V	V
S	N	O	W	Q	U	E	E	N	B	N	N	T	A	K	E	S	H	P	O
W	T	Q	I	H	Q	R	C	N	D	R	P	Q	H	U	R	O	T	R	I
C	E	L	L	O	K	P	R	E	K	L	W	W	D	P	N	S	R	R	Q
O	R	H	Q	E	G	Q	E	T	S	I	N	T	V	T	F	A	O	H	S
W	Z	U	F	U	E	R	L	P	N	K	W	W	O	N	S	K	N	L	Y

ACCORDION

ANTLERS

BASS

CELLO

CHRISTMAS

COMPASS

CROW

FLOWERWITCH

GERDA

GUITAR

HEART

ICE

JOURNEY

KAJ

MAP

MIRROR

NORTHPOLE

OGRE

RECORDER

REINDEER

ROBBER

SAUNA

SHARD

SNOW

SNOWFLAKE

SNOWQUEEN

TREEHOUSE

UKULELE

WOODS

YURT

